

Reliability through...

- Microprocessor control which enables the system to run self-test diagnostics.
- Separate string controllers providing design independence.

Serviceability through...

- Microprocessor diagnostics that allow the Memorex customer engineer to perform maintenance at the unit level — even down to the actuator, if required — while the remainder of the subsystem continues in uninterrupted and unimpaired operation.

More! Only the 3680 has...

- Unique single spindle architecture; storage capacity tailored to your system needs, economically!
- The 3680 system requires 64% less floor space (for equal capacity), and over a 70% reduction in power and heat requirements than 3350 class drives.

And Controller Flexibility...

- The 3888 controller. Functions in mixed environments by supporting 3680, 3650, 3652, 3670/75 class drives which allows you to have flexibility and migration options in the growth of your system. The 3888's speed matching buffer permits attachment to block multiplexer channels with data rates lower than 3 megabytes.

THE NEW MATH

3680
3680
3680
3680

MEMOREX
A Burroughs Company

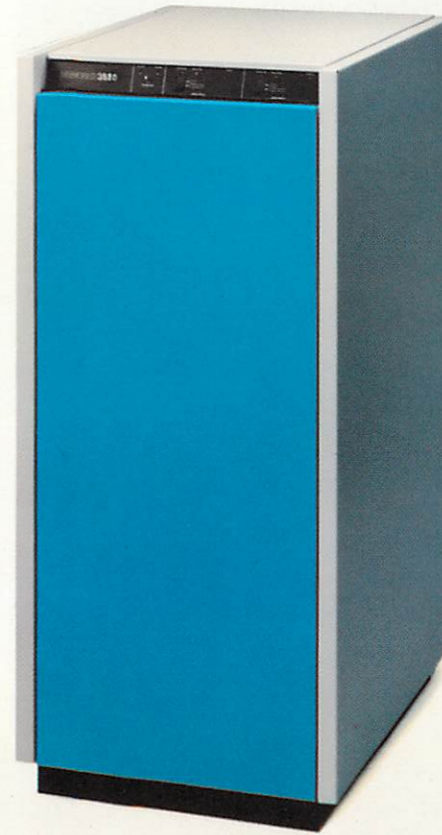
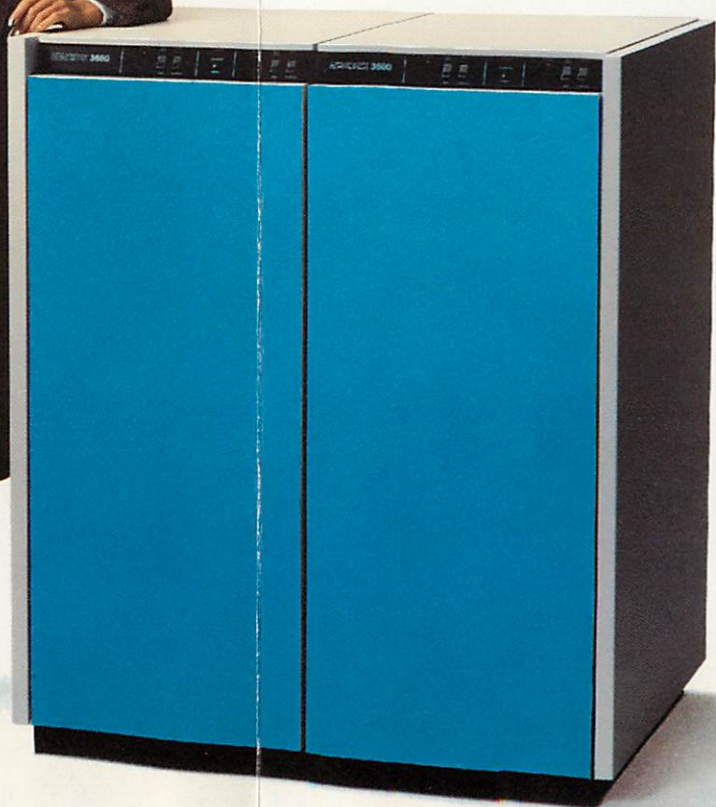
The 3680's unique SINGLE SPINDLE architecture provides flexibility and economy by

1.26x2
2.52 BILLION BYTES

3.78x3
3.78 BILLION BYTES

5.04x4
5.04 BILLION BYTES

6.30x5
6.30 BILLION BYTES



Memorex Corporation

San Tomas at Central Expressway
Santa Clara, California 95052

THE 3680...

Availability through...

- Maximum Availability Path Selection (MAPS)
- MAPS permits each head of string to transfer data simultaneously to a storage director from any actuator on the subsystem. This feature, in conjunction with Dual Path, gives you superior availability of data stored on the sub-system.

Performance through...

- Dual Actuators which allow each actuator the capability of accessing one half of the physical HDA (630 megabytes).
- Software which is fully compatible with IBM's MVS 3.8, MVS/SP, VM 6.0 and VM/SP 1.1 system software.

THE COMPUTER HISTORY MUSEUM



1 027 4504 0

you to add storage by:

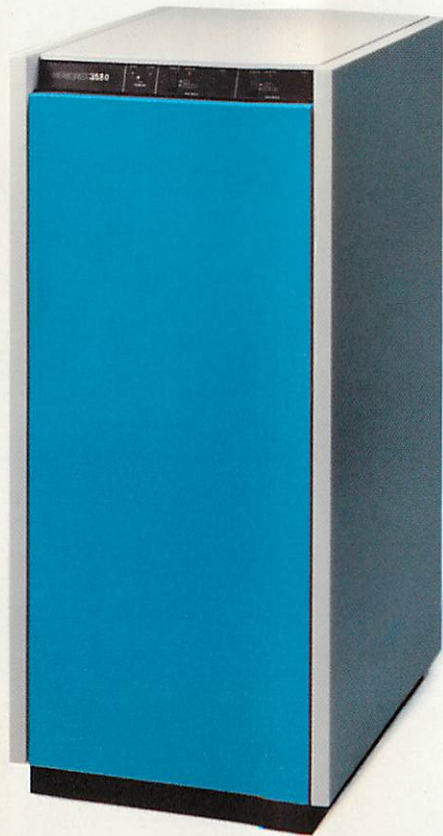
7.56 BILLION BYTES

x6



8.82 BILLION BYTES

x7



10.08 BILLION BYTES

x8

